



# Certificate of Analysis

## CANNABUSINESS LABORATORIES, LLC

### Customer:

Sleepy Wolf Farms  
3237 Sugartree Rd.  
Bethel, OH 45106

Sample ID **220630020**  
Order Number **CB220630011**  
Sample Name **Peppermint Tincture**

External Sample ID

Received Date **6/30/2022**  
COA Released **7/7/2022**

Batch Number **062422SW200922PLT**  
Product Type **Edible**  
Sample Type **Edible**

Comments

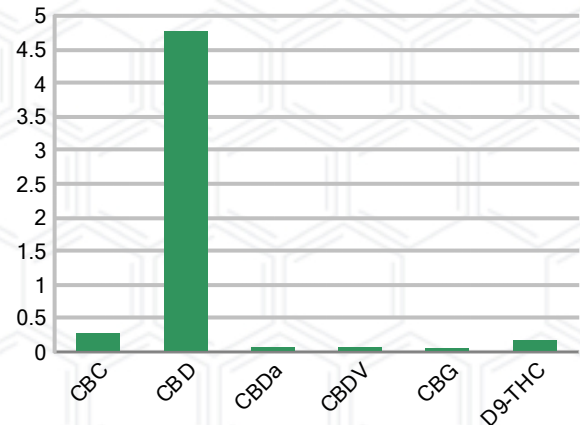
### CANNABINOID PROFILE

Analyte	LOQ (%)	% Weight	mg/g
CBC	0.01	0.276	2.761
CBD	0.01	4.774	47.74
CBDa	0.01	0.065	0.651
CBDV	0.01	0.065	0.651
CBG	0.01	0.053	0.534
CBGa	0.01	ND	ND
CBN	0.01	ND	ND
d8-THC	0.01	ND	ND
d9-THC	0.01	0.170	1.702
THCa	0.01	ND	ND
<b>Total Cannabinoids</b>		<b>5.404</b>	<b>54.04</b>
<b>Total Potential THC</b>		<b>0.170</b>	<b>1.702</b>
<b>Total Potential CBD</b>		<b>4.831</b>	<b>48.31</b>
<b>Total Potential CBG</b>		<b>0.053</b>	<b>0.534</b>
<b>Ratio of Total Potential CBD to Total Potential THC</b>			<b>28.42 : 1</b>
<b>Ratio of Total Potential CBG to Total Potential THC</b>			<b>0.31 : 1</b>

### SAMPLE IMAGE



### CANNABINOIDS % Weight



\*Total Cannabinoids refers to the sum of all cannabinoids detected.

\*Total Potential CBD = (0.877 x CBDa) + CBD. \*Total Potential THC = (0.877 x THCa) + THC. \*Total Potential CBG = (0.877 x CBGa) + CBG.

\*Total Potential THC/CBD are calculated to take into account the loss of an acid group during decarboxylation.



*J. Hobgood*  
Laboratory Manager

SIGNATURE

Jamie Hobgood

LABORATORY MANAGER

07/07/2022 8:44 AM

DATE

This product has been tested by CannaBusiness Laboratories using validated testing methodologies and a quality system. Values reported relate only to the product tested. CannaBusiness Laboratories makes no claims as to the efficacy, safety, or other risks associated with any detected or non-detected levels of any compounds reported herein. This Certificate shall not be reproduced except in full, without the written permission of CannaBusiness Laboratories. Photo is of sample received by the lab and may vary from final packaging. The results apply to the sample as received.



# Certificate of Analysis

## CANNABUSINESS LABORATORIES, LLC

### Customer

Sleepy Wolf Farms  
3237 Sugartree Rd.  
Bethel, OH 45106

Overall Batch Results	
Pesticide	Moisture Content
Potency	Water Activity
Mycotoxins	Heavy Metals
Microbial Screen	Residual Solvents
Terpenoids	

**Sample Name:** Peppermint Tincture

**Sample ID:** 220630020

**Order Number:** CB220630011

**Product Type:** Edible

**Sample Type:** Edible

**Received Date:** 06/30/2022

**Batch Number:** 062422SW200922PLT

**COA released:** 07/07/2022 8:44 AM

### Potency (mg/g)

Date Tested: 07/05/2022

Method: CB-SOP-028

Instrument:

<b>0.170 %</b> Total THC	<b>4.831 %</b> Total CBD	<b>5.404 %</b> Total Cannabinoids	<b>54.04 mg/g</b> Total Cannabinoids
-----------------------------	-----------------------------	--------------------------------------	---

Analyte	Result	Units	LOQ	Result	Units
CBC (Cannabichromene)	0.276	%	0.010	2.761	mg/g
CBD (Cannabidiol)	4.774	%	0.010	47.74	mg/g
CBDa (Cannabidiolic Acid)	0.065	%	0.010	0.651	mg/g
CBDV (Cannabidivarin)	0.065	%	0.010	0.651	mg/g
CBG (Cannabigerol)	0.053	%	0.010	0.534	mg/g
CBGa (Cannabigerolic Acid)	ND	%	0.010	ND	mg/g
CBN (Cannabinol)	ND	%	0.010	ND	mg/g
D8-THC (D8-Tetrahydrocannabinol)	ND	%	0.010	ND	mg/g
D9-THC (D9-Tetrahydrocannabinol)	0.170	%	0.010	1.702	mg/g
THCa (Tetrahydrocannabinolic Acid)	ND	%	0.010	ND	mg/g



*J. Hobgood*  
Laboratory Manager

Jamie Hobgood

07/07/2022 8:44 AM

SIGNATURE

DATE

NT = Not tested, ND = Not detected; LOQ = Limit of Quantitation; <LOQ = Detected; >ULOL = Above upper limit of linearity; CFU/g = Colony forming units per 1 gram; TNTC = Too numerous to count

This product has been tested by CannaBusiness Laboratories using validated testing methodologies and a quality system. Values reported relate only to the product tested. CannaBusiness Laboratories makes no claims as to the efficacy, safety, or other risks associated with any detected or non-detected levels of any compounds reported herein. This Certificate shall not be reproduced except in full, without the written permission of CannaBusiness Laboratories. Photo is of sample received by the lab and may vary from final packaging. The results apply to the sample as received.