



Certificate of Analysis

CANNABUSINESS LABORATORIES, LLC

Customer:

Sleepy Wolf Farms
3237 Sugartree Rd.
Bethel, OH 45106

Sample ID **220630021**
Order Number **CB220630011**
Sample Name **Dog/Cat Tincture**

External Sample ID

Received Date **6/30/2022**
COA Released **7/7/2022**

Batch Number **061622SW200922DCT**
Product Type **Edible**
Sample Type **Edible**

Comments

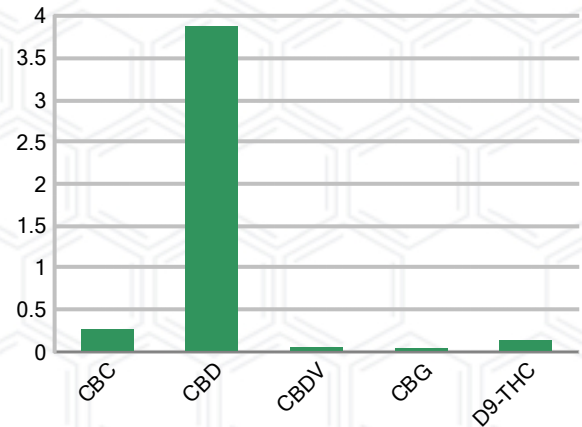
CANNABINOID PROFILE

Analyte	LOQ (%)	% Weight	mg/g
CBC	0.01	0.266	2.664
CBD	0.01	3.876	38.76
CBDa	0.01	ND	ND
CBDV	0.01	0.051	0.512
CBG	0.01	0.044	0.440
CBGa	0.01	ND	ND
CBN	0.01	ND	ND
d8-THC	0.01	ND	ND
d9-THC	0.01	0.135	1.352
THCa	0.01	ND	ND
Total Cannabinoids		4.373	43.73
Total Potential THC		0.135	1.352
Total Potential CBD		3.876	38.76
Total Potential CBG		0.044	0.440
Ratio of Total Potential CBD to Total Potential THC			28.71 : 1
Ratio of Total Potential CBG to Total Potential THC			0.33 : 1

SAMPLE IMAGE



CANNABINOIDS % Weight



*Total Cannabinoids refers to the sum of all cannabinoids detected.

*Total Potential CBD = (0.877 x CBDa) + CBD. *Total Potential THC = (0.877 x THCa) + THC. *Total Potential CBG = (0.877 x CBGa) + CBG.

*Total Potential THC/CBD are calculated to take into account the loss of an acid group during decarboxylation.



J. Hobgood
Laboratory Manager

SIGNATURE

Jamie Hobgood

LABORATORY MANAGER

07/07/2022 8:45 AM

DATE

This product has been tested by CannaBusiness Laboratories using validated testing methodologies and a quality system. Values reported relate only to the product tested. CannaBusiness Laboratories makes no claims as to the efficacy, safety, or other risks associated with any detected or non-detected levels of any compounds reported herein. This Certificate shall not be reproduced except in full, without the written permission of CannaBusiness Laboratories. Photo is of sample received by the lab and may vary from final packaging. The results apply to the sample as received.



Certificate of Analysis

CANNABUSINESS LABORATORIES, LLC

Customer

Sleepy Wolf Farms
3237 Sugartree Rd.
Bethel, OH 45106

Overall Batch Results	
Pesticide	Moisture Content
Potency	Water Activity
Mycotoxins	Heavy Metals
Microbial Screen	Residual Solvents
Terpenoids	

Sample Name: Dog/Cat Tincture

Sample ID: 220630021

Order Number: CB220630011

Product Type: Edible

Sample Type: Edible

Received Date: 06/30/2022

Batch Number: 061622SW200922DCT

COA released: 07/07/2022 8:45 AM

Potency (mg/g)

Date Tested: 07/05/2022

Method: CB-SOP-028

Instrument:

0.135 % Total THC	3.876 % Total CBD	4.373 % Total Cannabinoids	43.73 mg/g Total Cannabinoids
-----------------------------	-----------------------------	--------------------------------------	---

Analyte	Result	Units	LOQ	Result	Units
CBC (Cannabichromene)	0.266	%	0.010	2.664	mg/g
CBD (Cannabidiol)	3.876	%	0.010	38.76	mg/g
CBDa (Cannabidiolic Acid)	ND	%	0.010	ND	mg/g
CBDV (Cannabidivarin)	0.051	%	0.010	0.512	mg/g
CBG (Cannabigerol)	0.044	%	0.010	0.440	mg/g
CBGa (Cannabigerolic Acid)	ND	%	0.010	ND	mg/g
CBN (Cannabinol)	ND	%	0.010	ND	mg/g
D8-THC (D8-Tetrahydrocannabinol)	ND	%	0.010	ND	mg/g
D9-THC (D9-Tetrahydrocannabinol)	0.135	%	0.010	1.352	mg/g
THCa (Tetrahydrocannabinolic Acid)	ND	%	0.010	ND	mg/g



J.Hobgood
Laboratory Manager

Jamie Hobgood

07/07/2022 8:45 AM

SIGNATURE

DATE

NT = Not tested, ND = Not detected; LOQ = Limit of Quantitation; <LOQ = Detected; >ULOL = Above upper limit of linearity; CFU/g = Colony forming units per 1 gram; TNTC = Too numerous to count

This product has been tested by CannaBusiness Laboratories using validated testing methodologies and a quality system. Values reported relate only to the product tested. CannaBusiness Laboratories makes no claims as to the efficacy, safety, or other risks associated with any detected or non-detected levels of any compounds reported herein. This Certificate shall not be reproduced except in full, without the written permission of CannaBusiness Laboratories. Photo is of sample received by the lab and may vary from final packaging. The results apply to the sample as received.